

OUR TEAM

CONGRATULATIONS TO THE FOLLOWING EMPLOYEES FOR THEIR YEARS OF SERVICE!

- 25 Years:** Stephanie Anderson
- 20 Years:** Jan Leonard
- 10 Years:** Nichole Aragon, Eveline Bacon
- 5 Years:** Sally Beauchamp, Jessica Breen, Stephanie Crisp, Martha Duarte, Stacy Earle, Rachel Flores, Jenny Fox, Jessica Horne, Lilia Luna, Annie Nelson, Erick Ocampo, Farrah Smilanich

2020 BOARD OF DIRECTORS

- President:** Larry Jenkins
- Vice President:** Ken Rice
- Secretary:** Maggie Stepan
- Treasurer:** Dan Sturges
- Board Members:** Donald G. Fifield, Julie Dalke, Tina Kyprios, Rebecca Lewis, Kaitlyn Marchbanks, Nelly Navarro, Erin Wilson

CONNECT WITH US

Connect with us through our website, monthly e-newsletter, blog and by becoming a fan on social media.

 [Facebook.com/northwestcoloradohealth](https://www.facebook.com/northwestcoloradohealth)

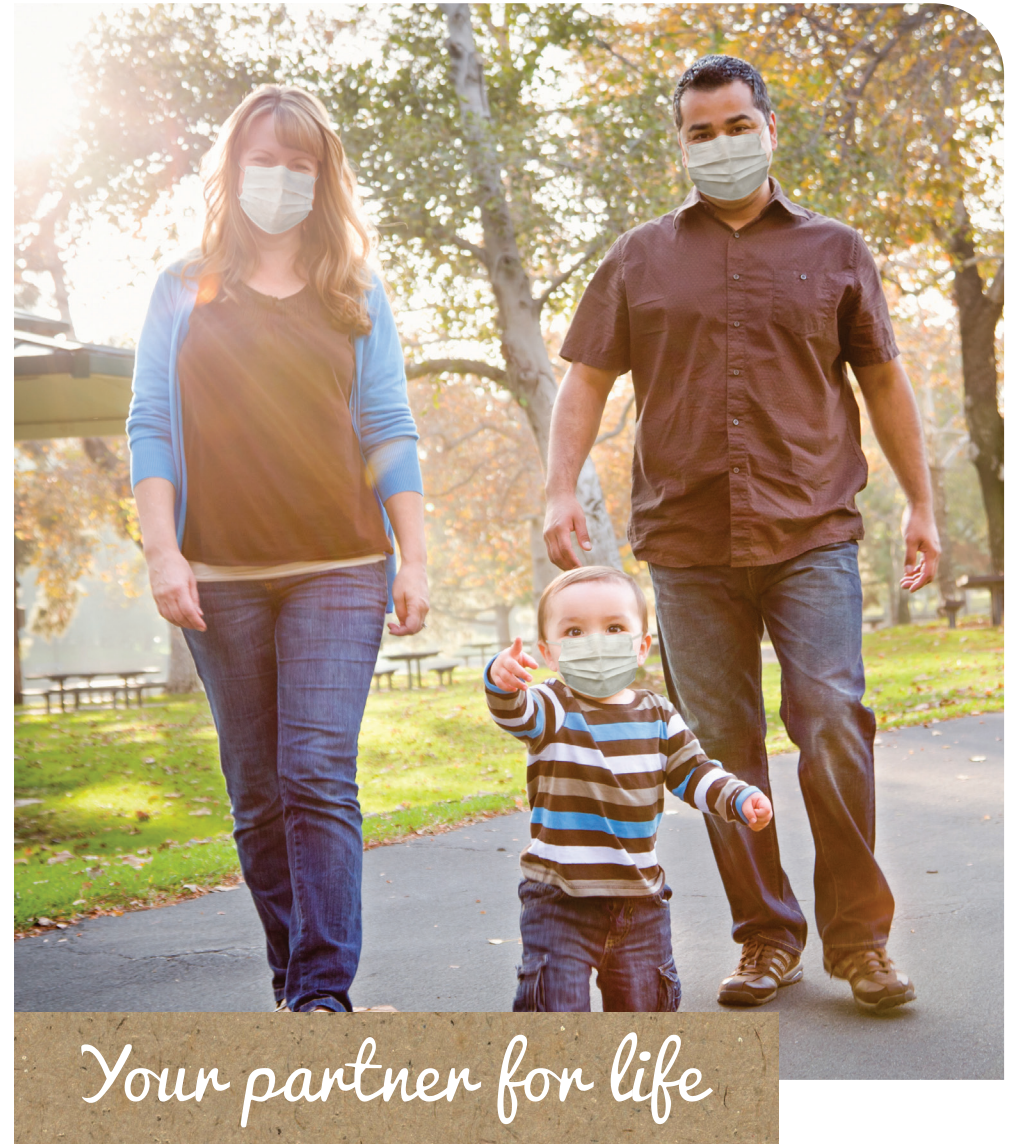
 [Twitter.com/nwcolohealth](https://twitter.com/nwcolohealth)

 [Instagram.com/northwestcoloradohealth](https://www.instagram.com/northwestcoloradohealth)

 blog.northwestcoloradohealth.org

 [youtube.com/c/NorthWestColoradoHealthSteamboatSprings](https://www.youtube.com/c/NorthWestColoradoHealthSteamboatSprings)

 [linkedin.com/company/northwestcoloradohealth](https://www.linkedin.com/company/northwestcoloradohealth)



970-824-8233
745 Russell Street
Craig, CO 81625

970-879-1632
940 Central Park Dr. Ste 101
Steamboat Springs, CO 80487

NORTHWEST COLORADO
HEALTH
northwestcoloradohealth.org

An Equal Opportunity Employer and Provider

2020
ANNUAL
REPORT

NORTHWEST COLORADO
HEALTH
northwestcoloradohealth.org

CEO & BOARD CHAIR UPDATE

2020 was a year that none of us expected, and it provided a new perspective on our belief that everyone deserves the chance to achieve their best health. Our healthcare heroes worked tirelessly to address the COVID-19 public health crisis while continuing to provide our community with necessary safety net services in our clinics, in your homes, and in the community. Through prioritizing Safety, Sustainability, Flexibility, and Employee Support, we are proud to say that we have only grown our reach in the community and have reinvigorated our commitment to provide equitable care for all. We would like to extend our deepest gratitude to our patients, volunteers, community partners, funders, and donors for supporting our mission throughout 2020 and making it possible to continue to serve our community.

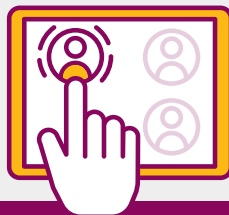
Best regards,
Stephanie Einfeld, CEO

Larry Jenkins, Board President

IMPACT

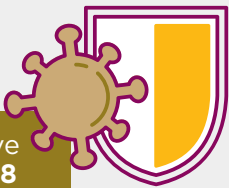


We employ
170 people in
Moffat and Routt
Counties



1 in 3 people in
the Yampa Valley
Utilize our services

Gave
1358
COVID
Tests

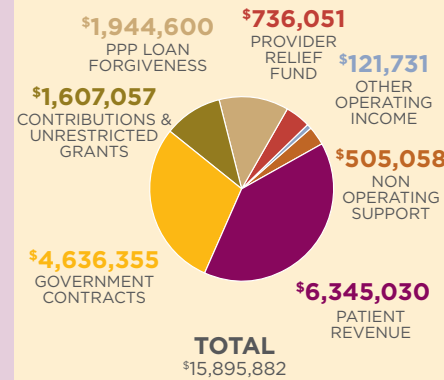


44% of Clinic
visits were done
via **Telehealth**

FINANCIAL SUMMARY

As a non-profit, our responsibility is to return benefit to the community and remain solvent.

SOURCES OF FUNDING



EXPENSES



*BASED ON 2020 AUDITED FINANCIALS

THE STORY OF 2020: OUR TEAM

Our staff were the stars of 2020. Even during the height of risk and uncertainty of the pandemic, we never stopped providing services. Our staff were on the frontlines in uncharted territory every day. In our clinics they were testing and diagnosing community members. They were in homes continuing to provide Home Health and Hospice Care, often times to those recovering or suffering from the effects of COVID-19. In the community they made sure our clients stayed connected and engaged, even during periods of severe isolation.



We worked diligently to maintain programming and services for our community, particularly the most vulnerable and marginalized. Our staff found innovative ways to connect with our community – from the transition to telehealth and conducting classes by Zoom, to the most basic communication tactics like letter writing, phone calls and emails. Our staff honorably put the health and wellbeing of the community first, often times putting themselves at great risk.

We continued to employ all our staff who stayed true to our mission to improve quality of life for all Northwest Colorado residents by providing comprehensive health resources and creating an environment that supports community wellness. During COVID-19, our programming often played a critical role in minimizing exposure to a high-risk population, while ensuring continuation of healthcare services.